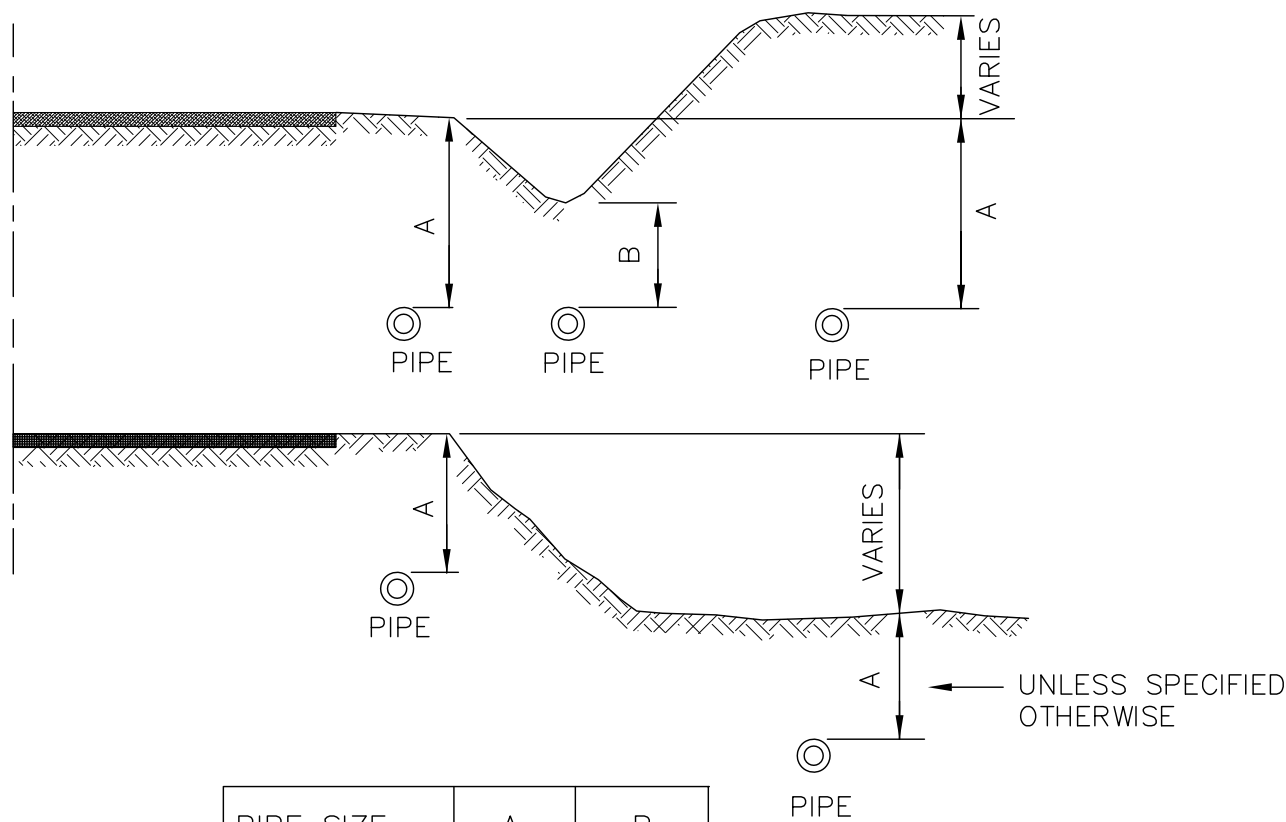


C OF ROADWAY

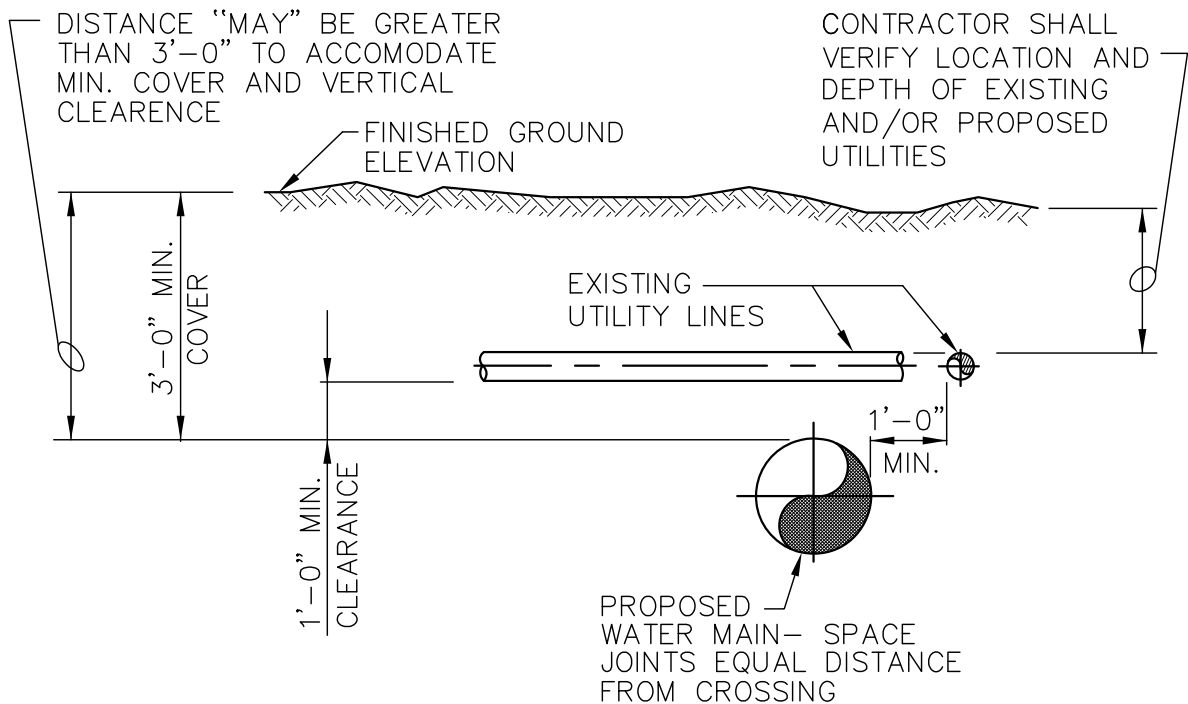


PIPE SIZE	A	B
6"–10"	36"	24"
12"–18"	36"	30"
20" & OVER	42"	36"

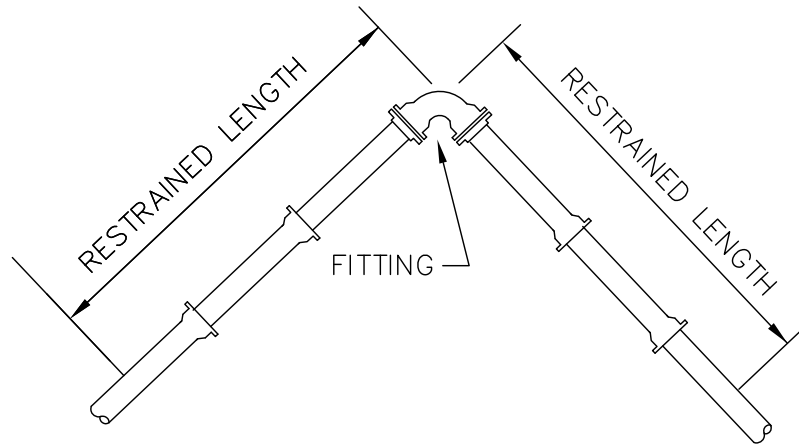
# City of Pacific

## Water Main Depth Requirements

APPROVED: _____			DRAWING NO. Main–Depth
DATE: 8/96	DRAWN: JH	CHECKED: TJO	SCALE: None



City of Pacific			
Typical Utility Crossing			
APPROVED: _____			DRAWING NO. WT- Util Xing
DATE: 8/96	DRAWN: JH	CHECKED: TJO	SCALE: None



PIPE SIZE	90° BEND	45° BEND	22 1/2° BEND	11 1/4° BEND	TEE OR DEAD END CAP
RESTRAINED LENGTH IN FEET					
4"	40	17	8	4	30
6"	55	23	11	6	39
8"	73	31	15	8	53
10"	88	37	18	9	67
12"	103	43	21	10	82
16"	133	55	27	13	110
18"	145	60	29	15	124

RESTRAINED LENGTHS SHOWN ARE MINIMUM AND FOR LINEAL FEET REQUIRED ON EACH SIDE OF FITTING INDICATED.

FOOTAGES ARE BASED ON 250 PSI PRESSURE AND 42 INCHES COVER. IF PRESSURE IS GREATER OR COVER IS LESS, THE RESTRAINED LENGTH SHALL BE INCREASED. DEVELOPER'S ENGINEER TO DESIGN SAME.

## City of Pacific

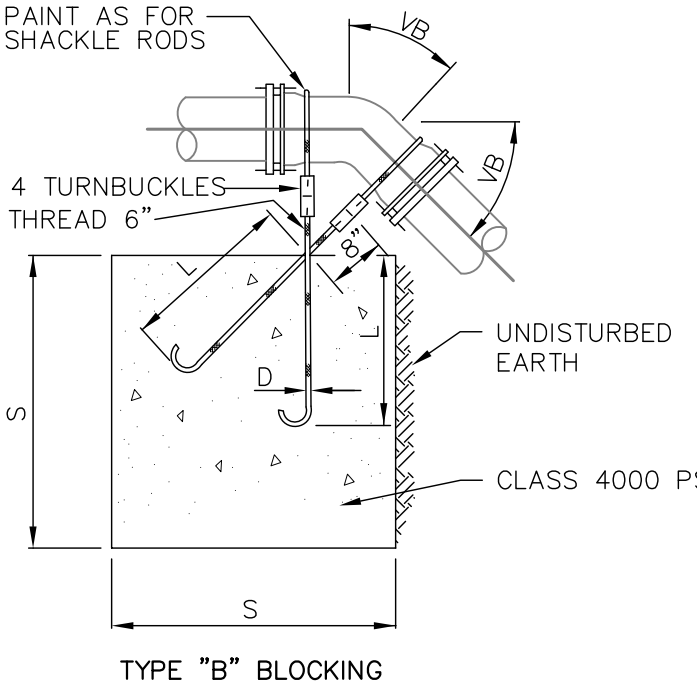
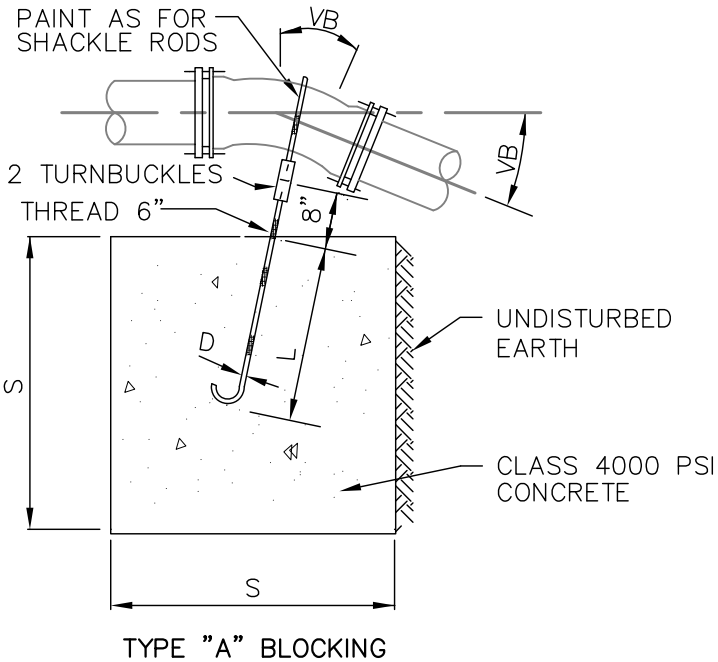
### Thrust Restraint for Ductile Iron Pipe

APPROVED: _____			DRAWING NO. WT- Thrst-Rest
DATE: 8/96	DRAWN: JH	CHECKED: TJO	SCALE: None

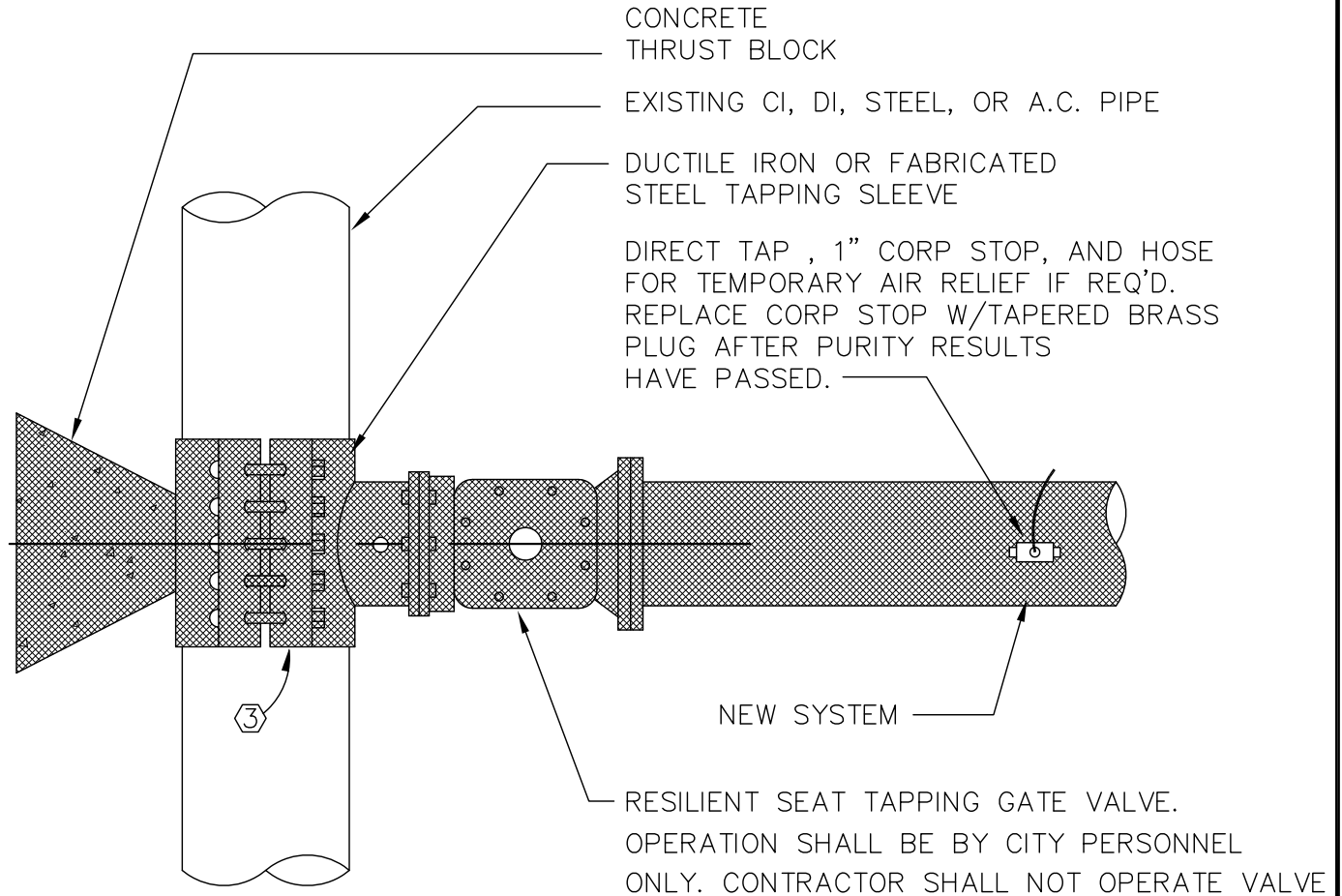
TYPE "A" BLOCKING						
FOR 11 1/4°-22 1/2° VERTICAL BENDS						
PIPE SIZE NOMINAL DIAMETER— INCHES	TEST PRESSURE PSI	VB  VERTICAL BEND DEGREES	No. OF CU. FT. OF CONC. BLOCKING	S  SIDE OF CUBE LIN. FT.	D  DIAM. OF SHACKLE RODS (2) INCHES	L  DEPTH OF RODS IN CONCRETE LIN. FT.
4"	300	11 1/4	8	2	5/8"	1.5
		22 1/2	11	2.2		2.0
6"	300	11 1/4	11	2.2	5/8"	2.0
		22 1/2	25	2.9		
8"	300	11 1/4	16	2.5	5/8"	2.0
		22 1/2	47	3.6		
12"	250	11 1/4	32	3.2	5/8"	2.0
		22 1/2	88	4.5	7/8"	3.0
16"	225	11 1/4	70	4.1	7/8"	3.0
		22 1/2	184	5.7	1 1/8"	4.0
20"	200	11 1/4	91	4.5	7/8"	3.0
		22 1/2	225	6.1	1 1/4"	4.0
24"	200	11 1/4	128	5.0	1"	3.5
		22 1/2	320	6.8	1 3/8"	4.5

NOTE:

THIS TABLE REPRESENTS THE "MINIMUM" CONSTRUCTION STANDARDS. THE DEVELOPER'S ENGINEER SHALL BE RESPONSIBLE FOR THE DESIGN AND SIZING OF ALL BLOCKING BASED ON SOIL CONDITIONS, TEST PRESSURES, AND OTHER RELEVANT CONSIDERATIONS.



City of Pacific			
Water Thrust Blocking			
APPROVED: _____			DRAWING NO. WT—Thrst—Bck
DATE: 8/96	DRAWN: JH	CHECKED: TJO	SCALE: None



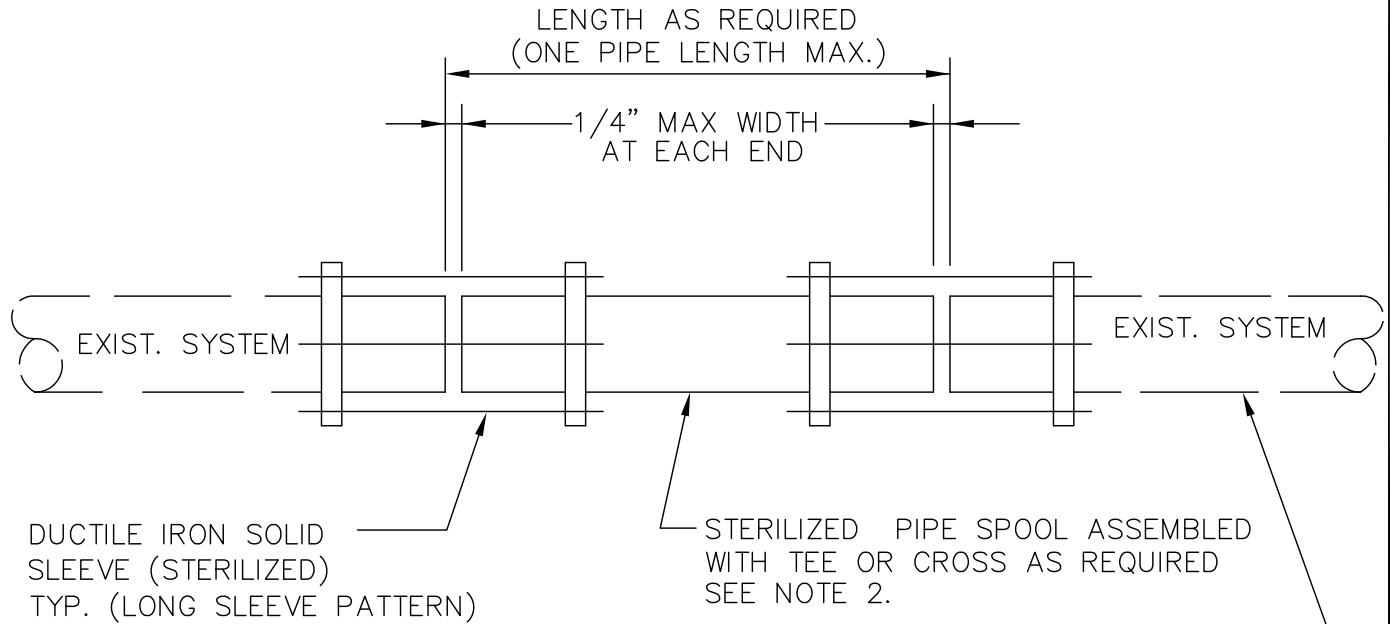
NOTE:

- ① VALVE BOX TO HAVE A LOCKING LID UNTIL ACCEPTED BY THE CITY.
- ② O.D. STEEL PIPE SHALL USE S.S. SLEEVE (FUSION COATED).
- ③ STAINLESS STEEL SLEEVE IS SHOWN FOR ILLUSTRATIVE PURPOSES ONLY. SEE SECTION 7-04 B3 "TAPPING SLEEVES AND TAPPING VALVES".

## City of Pacific

### Wet Tap Connection Detail

APPROVED: _____			DRAWING NO. WT- Wet Tap
DATE: 8/96	DRAWN: JH	CHECKED: TJO	SCALE: None



NOTE:

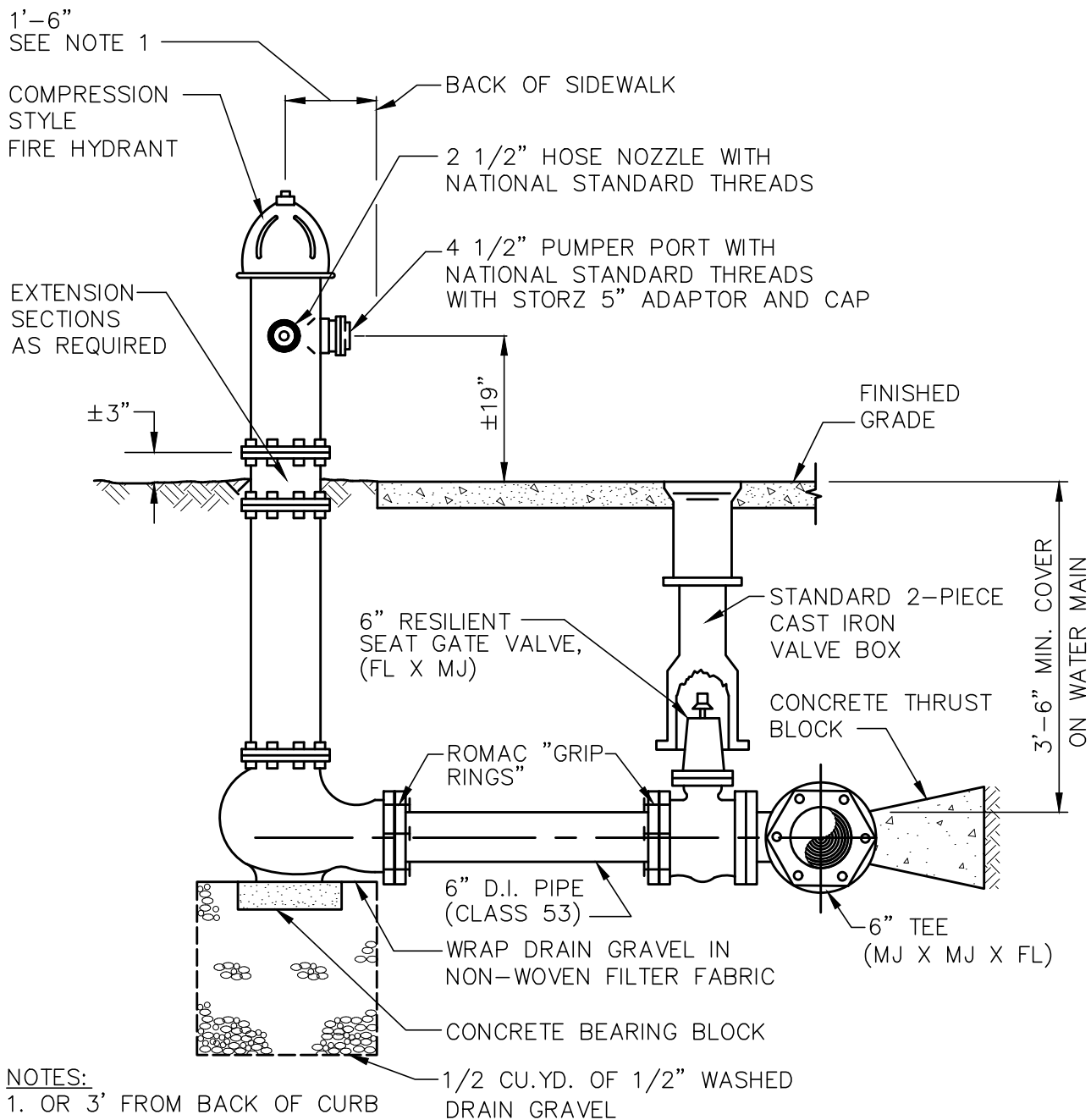
1. NO DEFLECTION SHALL BE ALLOWED AT EITHER COUPLING
2. ADDITIONAL "IN-LINE" VALVES(S) MAY BE REQUIRED AT THE DIRECTION OF THE CITY.

DISCHARGE PRESSURE PRIOR TO REMOVAL OF THRUST BLOCK AND CONNECTION TO EXIST. SYSTEM.

## City of Pacific

### Water A/C Pipe Cut In Connection

			DRAWING NO. WT— Cut in Conn
APPROVED:		DATE:	
DATE: 8/96	DRAWN: JH	CHECKED: TJO	SCALE: None



**NOTES:**

1. OR 3' FROM BACK OF CURB
2. PROVIDE 8' OF 12" MINIMUM OR EQUAL  
IN SIZE TO ANY ADJACENT DITCH PIPE  
TO COUNTY, STATE OR CITY STANDARDS  
IF APPLICABLE.
3. PROVIDE MIN. 5'-0" CLEARANCE AND  
LEVEL AREA AROUND HYDRANT
4. PAINT FIRE HYDRANT WITH TWO COATS  
PRESERVATIVE BRAND No.43-616 YELLOW
5. STENCIL FOOTAGE TO VALVE ON  
FIRE HYDRANT FOOTAGE UNDER PORT
6. REMOVE ALL CHAINS FOR  
FIRE HYDRANT CAPS

## City of Pacific

### Fire Hydrant Assembly

DRAWING NO.

WT-  
FHA

APPROVED:

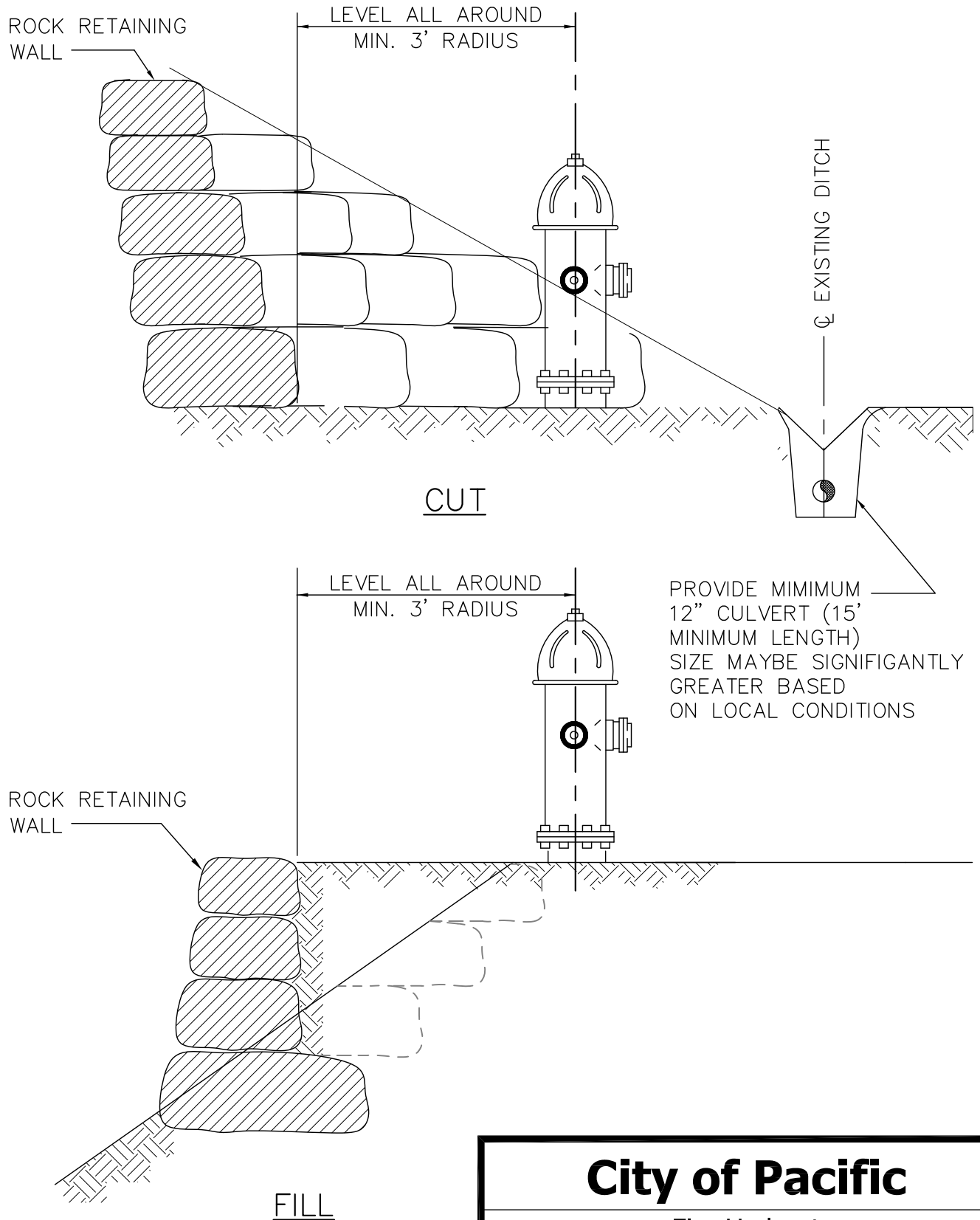
DATE:

DATE:  
8/96

DRAWN:  
JH

CHECKED:  
TJO

SCALE:  
None

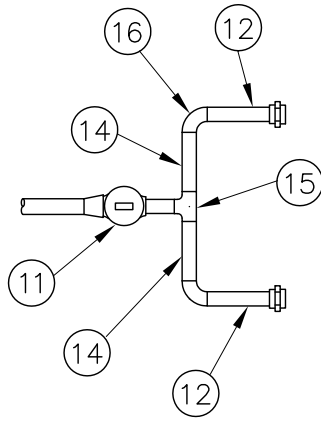


## City of Pacific

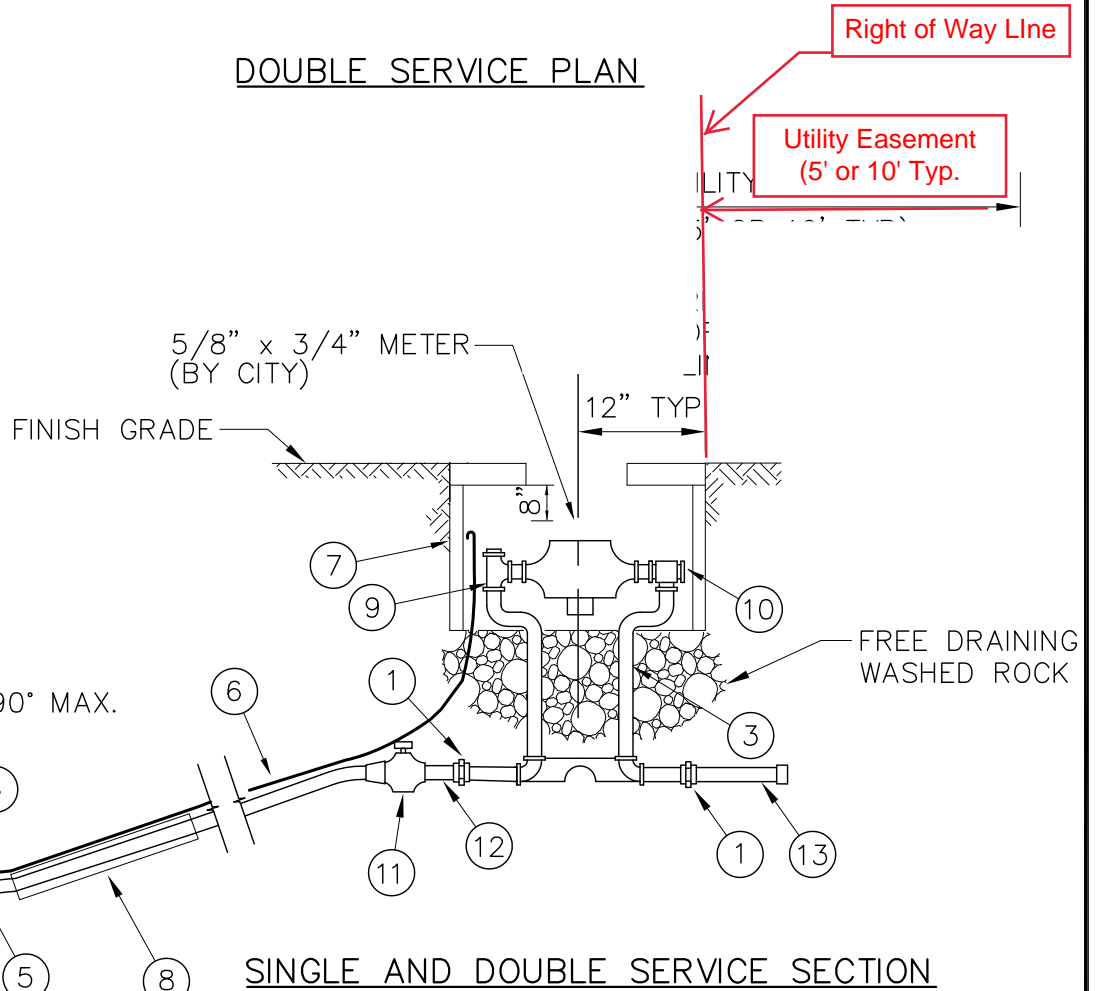
### Fire Hydrant Cut or Fill Location

			DRAWING NO. WT- FHA-C-F
APPROVED: _____		DATE: _____	
DATE: 8/96	DRAWN: JH	CHECKED: TJO	SCALE: None





DOUBLE SERVICE PLAN



SINGLE AND DOUBLE SERVICE SECTION

**NOTES:**

1. Provide a 2' wide sidewalk panel centered at each meter for maintenance and repair.
2. Meter boxes in sidewalks can be concrete or plastic.

Approved by Public Works  
Sub-Committee on 1/30/01  
PAGE 1 OF 2

# City of Pacific

## Water Services 3/4 Inches and 1 Inch

APPROVED:

DATE:

DATE:  
12/00

DRAWN:  
EH

CHECKED:  
DB

DRAWING NO.

WT-  
Res Srvc

SCALE:  
None

## LEGEND

### SINGLE AND DOUBLE WATER SERVICE DETAIL

- ① 3/4" METER YOKE END CONNECTION EQUAL TO MUELLER H-14222
- ② 1" IPTxIPS INSTA-TITE CORP STOP EQUAL TO MUELLER B-25005
- ③ 5/8"x3/4"x12" COPPER SETTER EQUAL TO MUELLER B-2404
- ④ ROMAC SADDLE (1" IPT) SINGLE STAINLESS STEEL STRAP FOR PIPE DIAMETERS LESS THAN 10" AND DOUBLE STAINLESS STEEL STRAP FOR PIPE DIAMETERS 10" AND GREATER.
- ⑤ 1" (DOUBLE) OR 3/4" (SINGLE) HIGH MOLECULAR (200 PSI, SDR 7) "POLY" PIPE (LENGTH AS REQUIRED)
- ⑥ 14 GAUGE WIRE FROM MAINLINE TAP TO METER BOX AND EXPOSE 6" MINIMUM IN BOX (RUN INSIDE 2" PVC GUARD CONDUIT WHERE APPLICABLE)
- ⑦ METER BOX - CARSON 1419 OR EQUAL (SET FLUSHED WITH FINISHED GRADE, PIT LID ADAPTER HOLE IN LID)
- ⑧ INSTALL SERVICE LINE IN 2" PVC GUARD PIPE (SCH-80) WHEN CROSSING ROADWAY (3' MINIMUM BEYOND AND BENEATH PAVEMENT SECTION) NOT REQ'D WHEN WATER MAIN IS UNDER STREET PAVEMENT
- ⑨ TOP ENTRY VERTICAL LOCKING BALL ANGLE METER VALVE
- ⑩ ANGLE DUAL CHECK VALVE
- ⑪ 1" IPSxPE INSTA-TITE CURB VALVE EQUAL T MEULLER H-15191
- ⑫ 3/4" IPSx12" LONG BRASS NIPPLE
- ⑬ 3/4" IPSx12" LONG BRASS NIPPLE W/CAP

### DOUBLE SERVICE

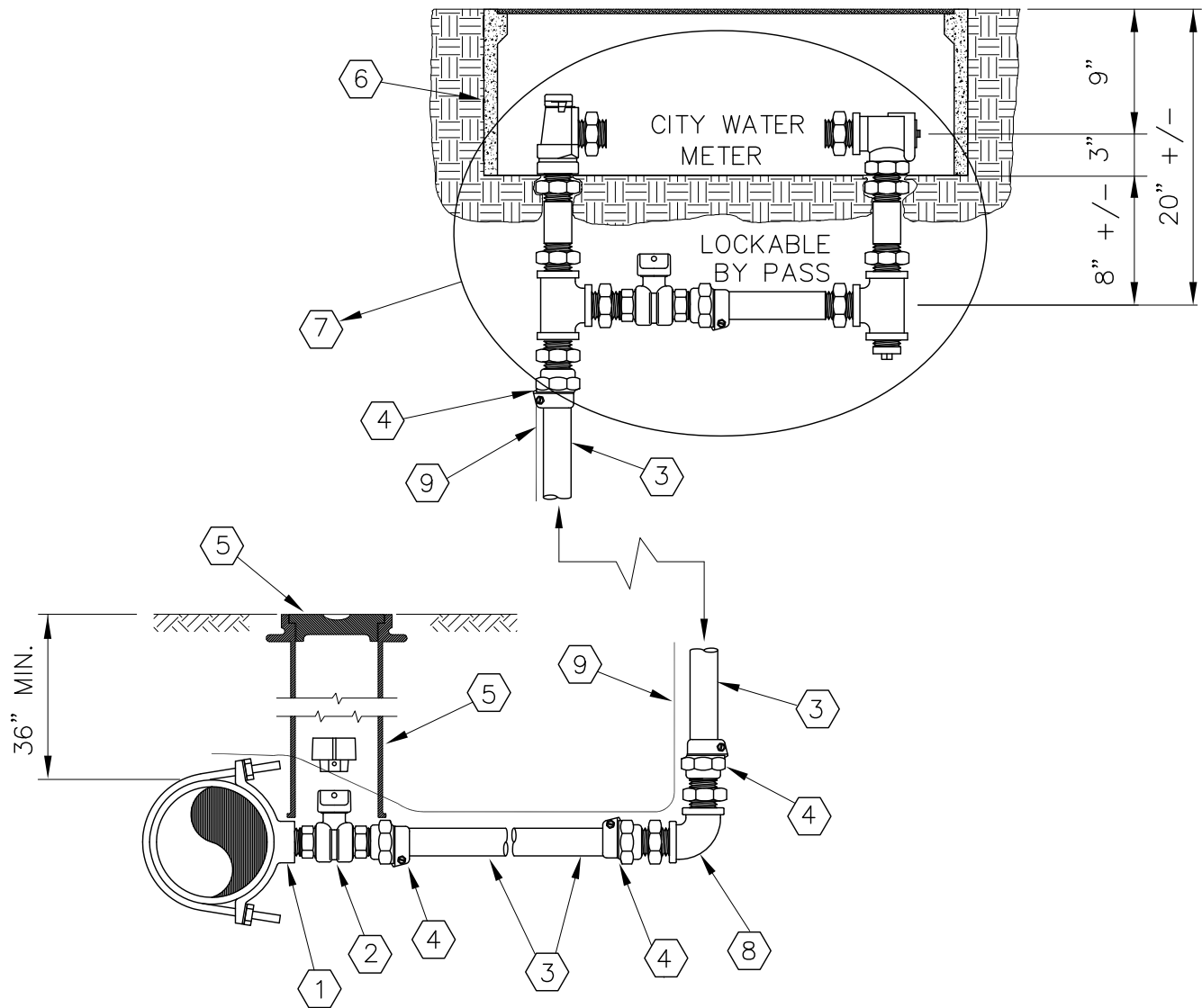
- ⑭ 3/4" IPSx18" LONG BRASS NIPPLE
- ⑮ 3/4"x3/4"x1" BRASS BULLHAD TEE
- ⑮ 3/4"x3/4"x1" BRASS ELBOW

Approved by Public Works  
Sub-Committee on 1/30/01

## **City of Pacific**

### **Water Service 3/4 Inches and 1 Inch**

APPROVED: _____			DRAWING NO. WT- Srvc 1
DATE: 12/00	DRAWN: EH	CHECKED: DB	SCALE: None



DESCRIPTION	MAKER OR RATING	1-1/2"	2"
1. Double Stainless Steel Strap Saddle	Romac or Equal	202 S IPT	202 S IPT
2. Corporation Valve	Mueller or Equal	H-9969	H-9969
3. Pipe – High Molecular Polyethylene	AWWA C901	SDR9	SDR9
4. Compression Couplings	Mueller or Equal	Female: H-15457 Male: H-15428	Female: H-15457 Male: H-15428
5. Valve Box	Rich or Equal	1730	1730
6. Meter Box	Carson or Equal	H-1423	H-1423
7. Meter Setter w/Lockable Bypass	Mueller or Equal	1-1/2"	2"
8. 90° Brass Street Elbow		Solid	Solid
9. Tracer Wire	14 Gauge Copper Wire		

**City of Pacific**

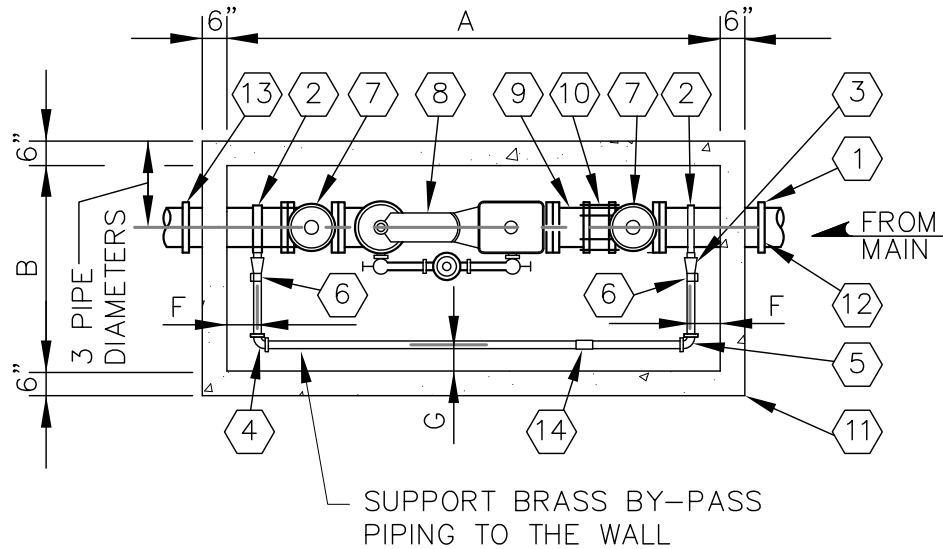
Water Service  
1-1/2 Inches and 2 Inches

APPROVED: \_\_\_\_\_ DATE: \_\_\_\_\_

DATE: 8/96DRAWN: JHCHECKED: TJO

DRAWING NO.  
WT-  
Service 2

SCALE:  
None



#### NOTES

1. "SENSUS" METERS (3" TO 10") SHALL BE FURNISHED BY CONTRACTOR AND SIZED BY CITY. METERS SHALL READ IN CUBIC FEET.
2. VAULT SHALL BE PRECAST, UTILITY VAULT OR OWNER APPROVED EQUAL
3. ALL PIPE & FITTINGS 4" AND LARGER SHALL BE CEMENT LINED.
4. PIPING FROM MAIN TO VAULT SHALL BE AS SHOWN IN TABLE BELOW. PROVIDE TEE WITH VALVE ON DISTRIBUTION MAIN.
5. ALL PIPING SHALL BE PAINTED (TWO COATS) WITH PARKER PAINT MARINE ENAMEL, MARATHON 1065, TAHOE BLUE.

METER SIZE	MAIN-LINE	BYPASS	A	B	C	D	E	F	G
3"	4" DI.	1 1/2" BRASS	7'-6"	3'-0"	9 1/2"	6"	2'-8"	9"	4"
4"	4" DI.	1 1/2" BRASS	7'-6"	3'-0"	9 1/2"	6"	2'-8"	9"	4"
6"	6" DI.	2" BRASS	9'-6"	3'-6"	12"	6"	2'-8"	9"	4"
8"	8" DI.	4" DI.	11'-0"	4'-0"	12"	9"	3'-6"	14"	6"
10"	10" DI.	4" DI.	13'-0"	5'-0"	16"	12"	4'-0"	16"	6"

## City of Pacific

### Water Meter Vault 3-inches thru 10-Inches

APPROVED: \_\_\_\_\_

DATE: \_\_\_\_\_

DATE: 8/96

DRAWN: JH

CHECKED: TJO

DRAWING NO.

WT-  
Mtr 3-10 Pln

SCALE:

None

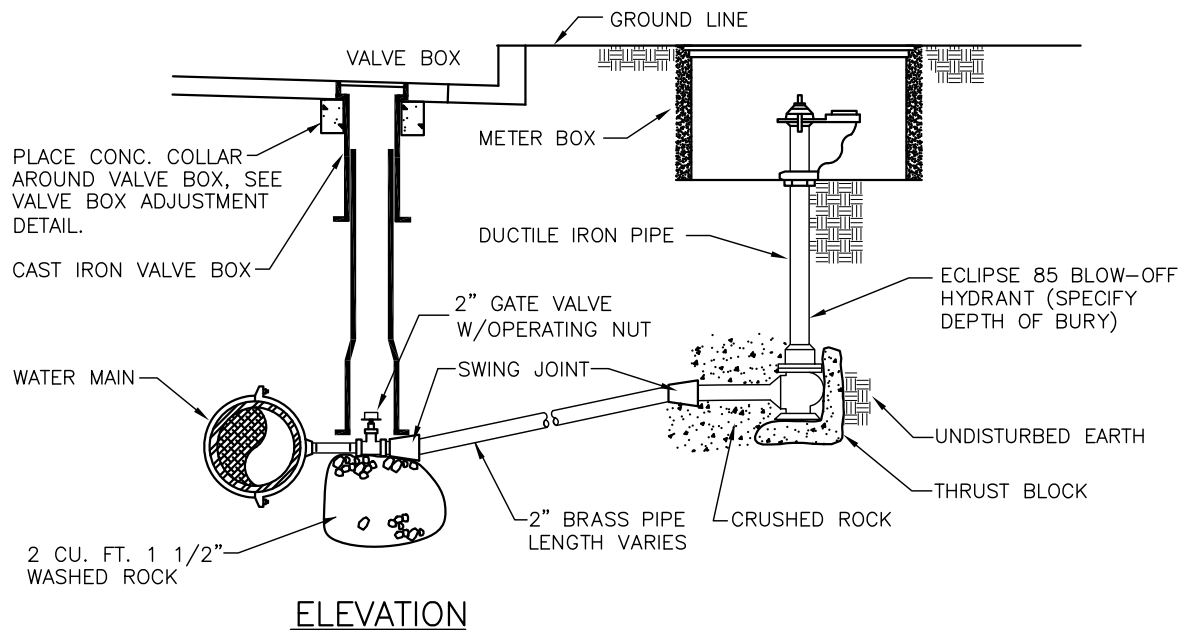
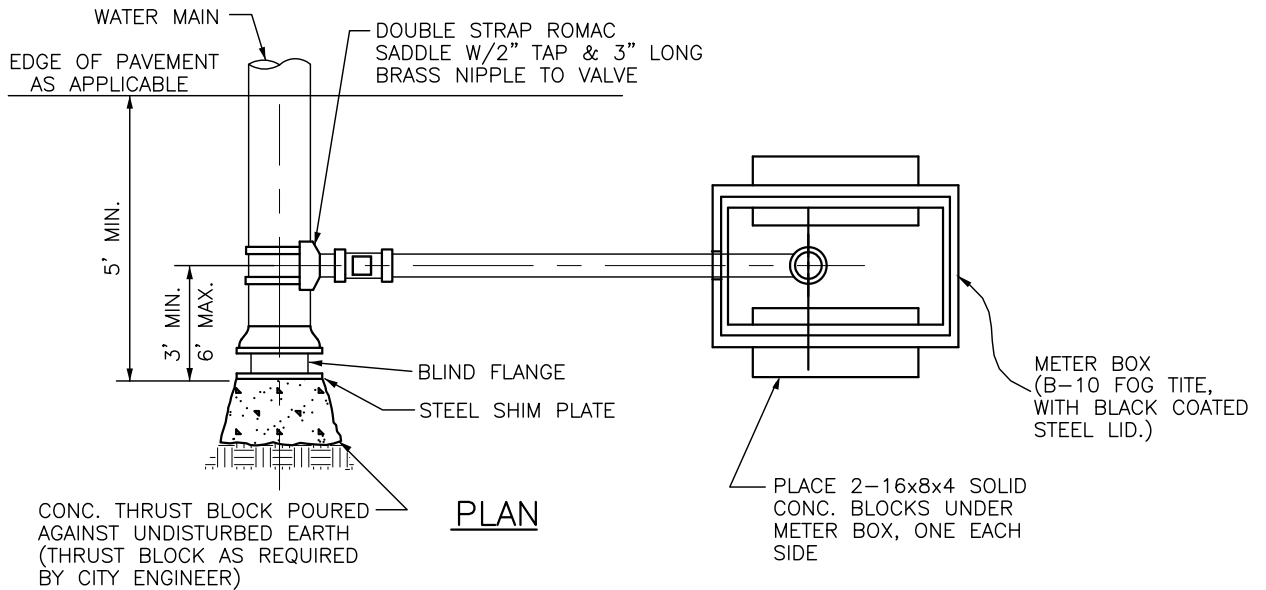
## MATERIAL LIST

1. 2-FLEX CPLG TO FIT ROCKWELL 441 (4" X 3" REDUCER, M.J. FOR 3" METER
2. 2-DOUBLE STRAP SERVICE CLAMPS, ROMAC 101 WITH IPS TAP, OR EQUAL
3. 3-STRAIGHT CPLG. BRASS TO OUTSIDE I.P. THREAD MUELLER H-15425,H-15428 110 COMP., OR EQUAL
4. 1 1/4" BEND CPLG BRASS TO BRASS MUELLER H-15525.
5. 1 1/4" BEND CPLG, BRASS TO OUTSIDE I.P. THREAD MUELLER H-15530, OR EQUAL.
6. 1 BALL VALVE WITH PADLOCK WING OR LOCK CAP, FORD B21-444W OR B21-666 WITH LOCK CAP OR B21-777 WITH LOCK CAP.
7. 2-RESILIENT SEAT GATE VALVE, FL X FL, (RISING STEM)
8. 1-3" TO 10" COMPOUND METER ("SENSUS" TOUCH READ) - SIZE TO BE AS SPECIFIED BY CITY AND FURNISHED BY CONTRACTOR/DEVELOPER
9. 1 C.I. ADPT. FL X PE (LENGTH TO FIT)
10. 1-CPLG. ADAPT., FL ROCKWELL 912, OR OWNER APPROVED EQUAL
11. CAST IN PLACE OR PRECAST CONCRETE VAULT WITH (H20) BILCO (HATCH SIZE AND LOCATION TO BE APPROVED BY CITY)
12. WELDED FL RESTRAINT OR SHAKLE TO THRUST BLOCK TO PREVENT MOVEMENT IF METER IS REMOVED
13. INSULATED CPLG. TO 3" CU SERVICE.
14. UNION
15. INSTALL ALUMINUM LADDER WITH TELESCOPIC RISER FASTEN TO WALL WITH STAINLESS STEEL FASTENER AT MAXIMUM THREE FOOT INTERVALS.
16. PROVIDE 4" DRAIN PIPE TO DAYLIGHT (MIN. SLOPE = 2%) OR CITY APPROVED SUMP PUMP SYSTEM AS REQUIRED.

## **City of Pacific**

### **Water Meter Vault 3 Inches thru 10 Inches**

<div style="display: flex; justify-content: space-between;"> <div>APPROVED: _____</div> <div>DATE: _____</div> </div>			DRAWING NO. WT- Mtr 3-10 Nts
DATE: 8/96	DRAWN: JH	CHECKED: TJO	SCALE: None



BLOW-OFF HYDRANTS SHALL BE NON-FREEZING, SELF-DRAINING TYPE.

1. SET UNDERGROUND IN CITY APPROVED METER BOX, THESE HYDRANTS WILL BE FURNISHED WITH A 2" FIP INLET, A NON-TURNING OPERATING ROD, AND SHALL OPEN TO THE DESIGN, AND BE SERVICEABLE FROM ABOVE GRADE WITH NO DIGGING.
2. THE OUTLET SHALL ALSO BE BRONZE AND BE 2-1/2" NST.
3. HYDRANTS SHALL BE LOCKABLE TO PREVENT UNAUTHORIZED USE.

(SPECIFY OVERALL LENGTH 6" SHORTER THAN NORMAL DEPTH OF BURY. MINIMUM OPENING IN METER BOX SHALL BE 10".)

## City of Pacific

### Water 2" Blow-Off Assembly

DRAWING NO.

WT-  
Blow-Off

APPROVED:

DATE:

DATE:

8/96

DRAWN:

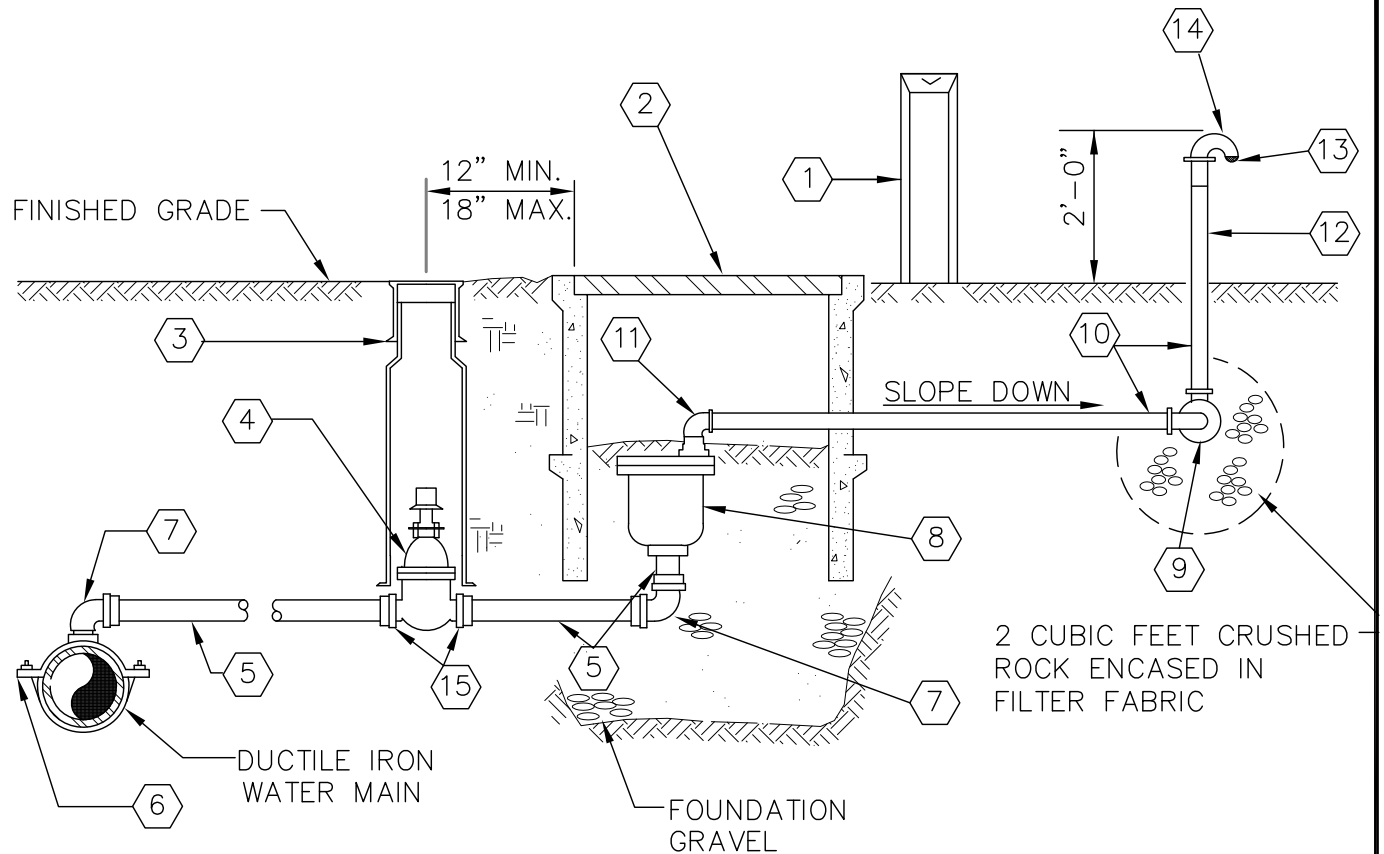
JH

CHECKED:

TJO

SCALE:

None



- |   |   |
|---|---|
| <p>1 VALVE MARKER POST PAINTED YELLOW WITH BLACK STENCILED DISTANCE &amp; DIRECTION TO VALVE.</p> <p>2 17"X28" CONC. METER BOX WITH 3/8" STEEL DIAMOND PLATE COVER, FOG-TITE METER SEAL CO. NO.2</p> <p>3 CAST IRON VALVE BOX</p> <p>4 2" AWWA RESILIENT SEAT GATE VALVE THD X THD, WITH OPERATING NUT</p> <p>5 2" TYPE "K" COPPER PIPE</p> <p>6 DOUBLE STRAP SERVICE CLAMP</p> <p>7 90° BEND MUELLER No. H-15526 COMPRESSION X COMPRESSION</p> | <p>8 2" COMBINATION AIR &amp; VACUUM RELEASE ASSEMBLY; A. APCO MODEL 144. B. CRISPIN MODEL CRAL 2.</p> <p>9 2, 2"X90° ELL, GALV. WITH WEEP HOLE IN VERTICAL BEND</p> <p>10 2" GALV. IRON PIPE (FIELD LOCATE NEXT TO EXISTING PROPERTY LINE).</p> <p>11 2"X90° ELL (GALV.)</p> <p>12 PAINT PORTION ABOVE GROUND WITH TWO COATS OF PRESERVATIVE BRAND No. 43-616 YELLOW PAINT</p> <p>13 2" BEEHIVE STRAINER</p> <p>14 2" OPEN PATTERN RETURN BEND</p> <p>15 STRAIGHT COUPLING, MUELLER No. H-1542 COMPRESSION X COMPRESSION</p> |
|---|---|

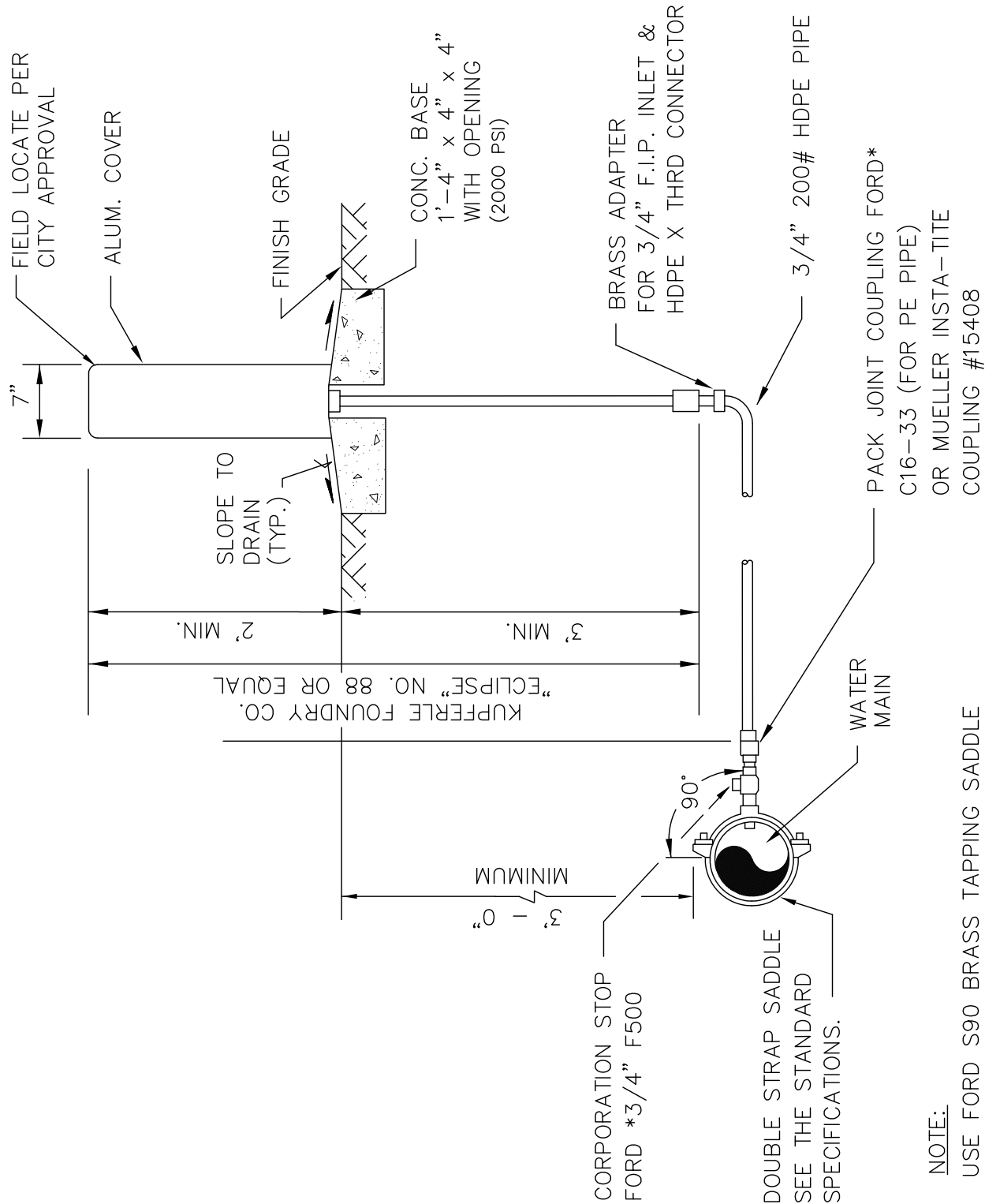
NOTES:

- ALL PIPING BETWEEN DOUBLE STRAP SADDLE AND INLET SIDE OF COMBINATION AIR AND VACUUM ASSEMBLY SHALL BE COPPER
- TAP WATER MAIN AT HIGH POINT, LOCATION TO BE APPROVED BY THE CITY

## City of Pacific

### Water Combination Air/Vacuum Assembly

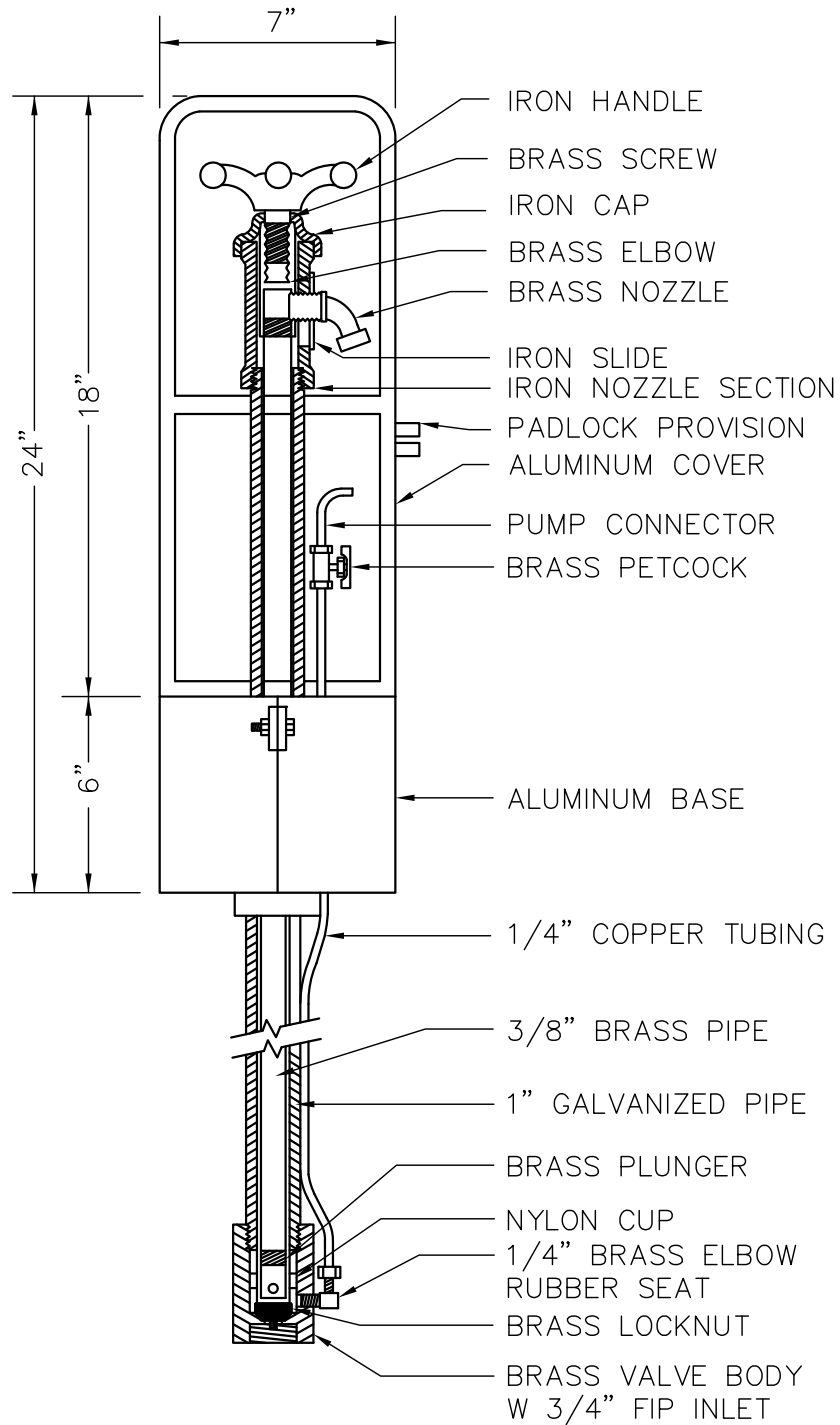
APPROVED: _____			DRAWING NO. WT- Air/Vac
DATE: 8/96	DRAWN: JH	CHECKED: TJO	SCALE: None



NOTE:  
USE FORD S90 BRASS TAPPING SADDLE  
IF WATER MAIN PIPE IS P.V.C. AND FB100,  
FB 1101, CORPORATION STOPS AS  
NECESSARY.

City of Pacific			
Sampling Station Detail			
APPROVED: _____			DRAWING NO. WT- Smpl-Sta-2
DATE: 8/96	DRAWN: JH	CHECKED: TJO	SCALE: None





NOTE:

USE FORD S90 BRASS TAPPING SADDLE  
IF WATER MAIN PIPE IS P.V.C. AND FB100,  
FB 1101, CORPORATION STOPS AS  
NECESSARY.

## City of Pacific

### Sampling Station Detail

DRAWING NO.

WT-  
Smpl-Sta-1

APPROVED:

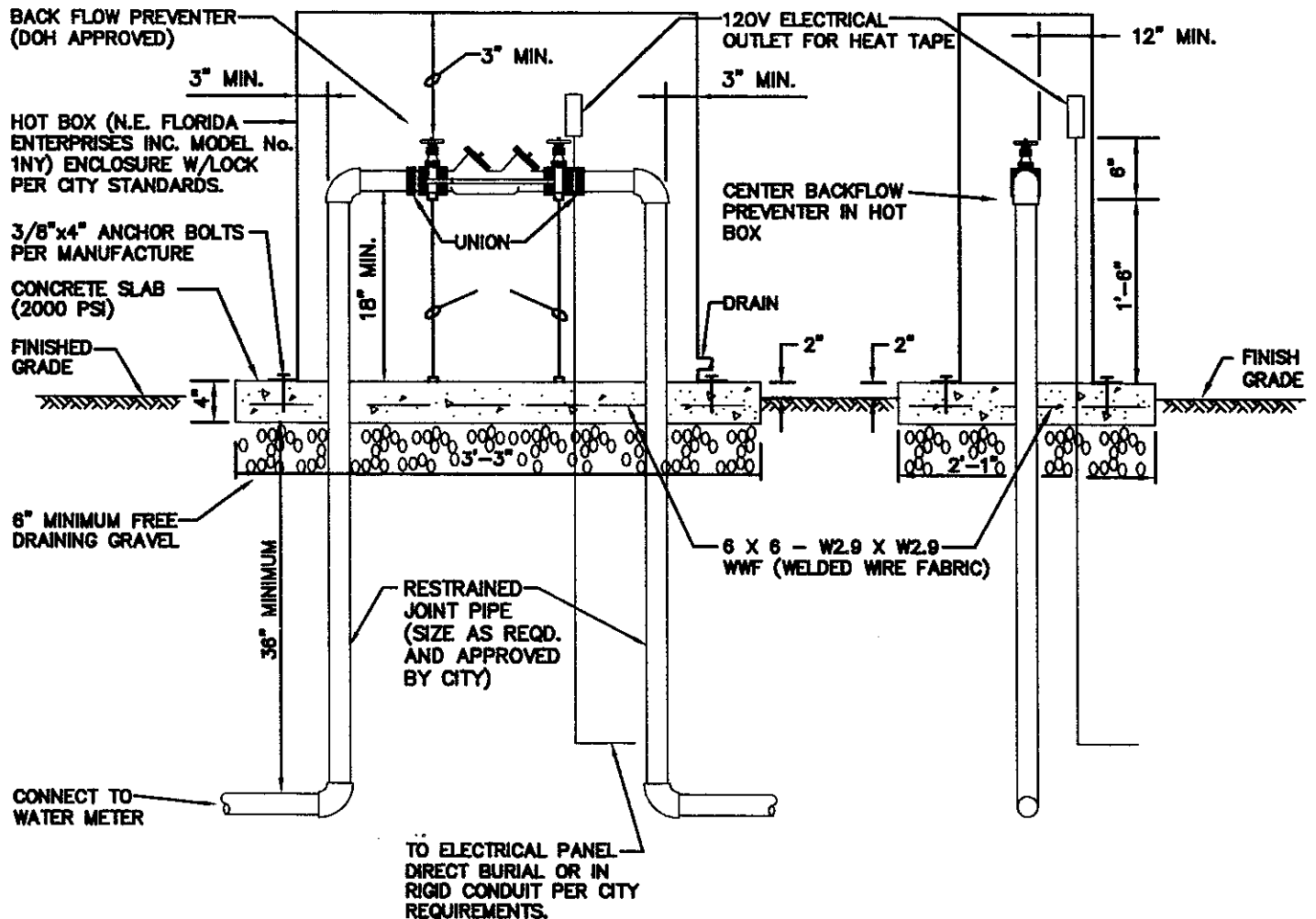
DATE:

DATE:  
8/96

DRAWN:  
JH

CHECKED:  
TJO

SCALE:  
None



## REDUCED PRESSURE BACKFLOW DEVICE

NOT TO SCALE

- 1 PROVIDE CITY APPROVED SUPPORT FOR 2 1/2" AND LARGER DEVICES.

CITY OF PACIFIC

## REDUCED PRESSURE BACKFLOW DEVICE

APPROVED

*T. J. O.*

3.8.99

DWG. NO.

RPBD

BY CITY

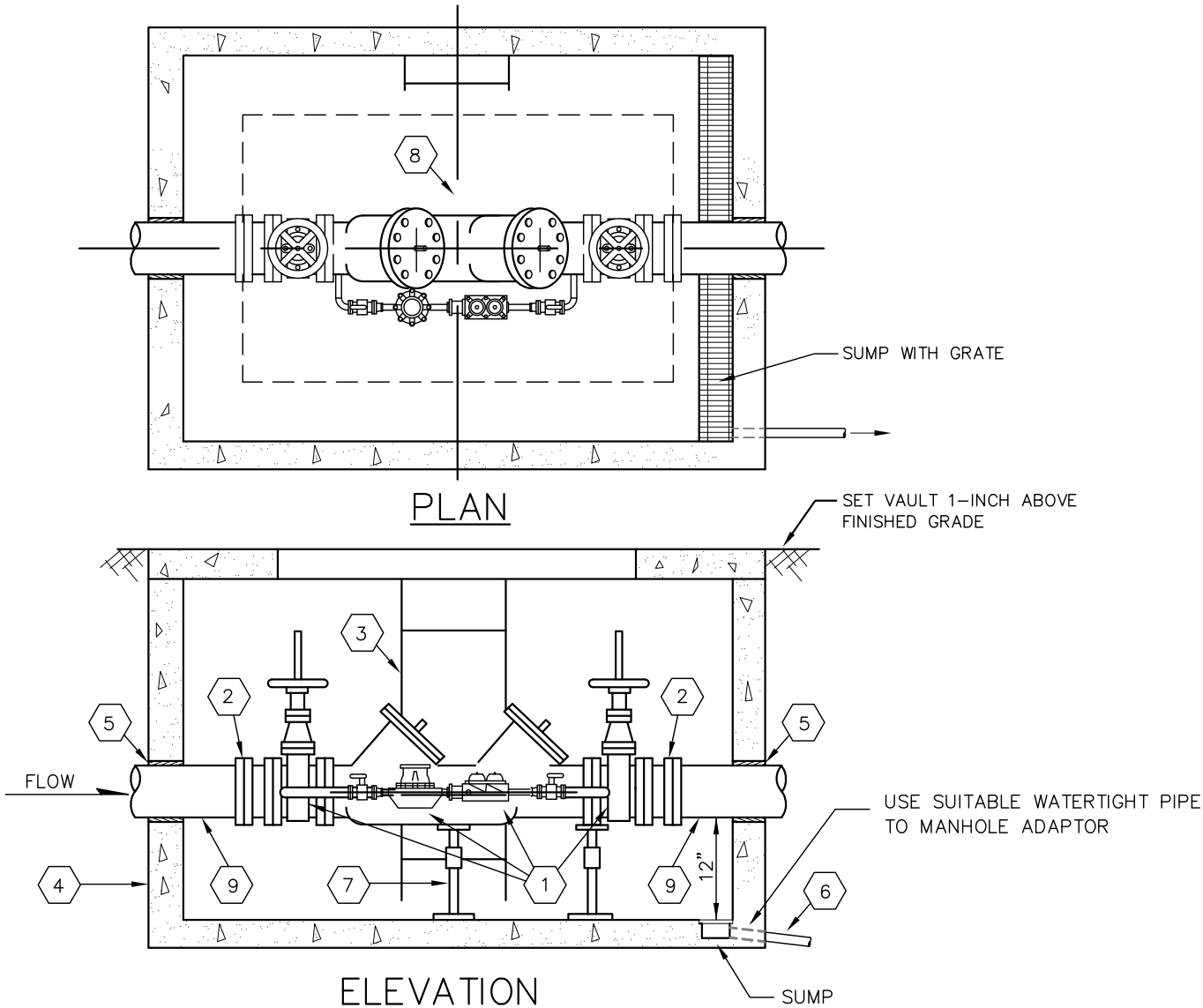
DATE

DATE:  
8/96

DRWN:  
J.H.

CHKD:  
T.J.O.

SCALE:  
NONE

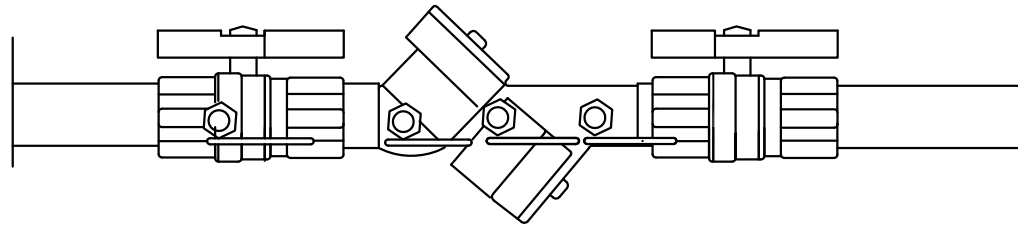


- 1 HERSEY MODEL, DETECTOR DOUBLE CHECK VALVE ASSEMBLY SIZED BY CITY OR EQUAL
- 2 UNI-FLANGE WITH SET SCREWS
- 3 GALVANIZED STEEL LADDER TO BE SECURED TO VAULT
- 4 CONCRETE VAULT TO BE SIZED BY CITY, WITH BILCO COVER (H2O LOADING)
- 5 WATER-TIGHT GROUT. RESTRAIN INLET/OUTLET PIPE WITH WELDED FLANGE OR SHACKLE TO THRUST BLOCK TO PREVENT. SHACKEL THROUGH VAULT IF CHECK VALVE ASSEMBLY IS REMOVED.
- 6 4" MIN. DIAMETER PVC DRAIN TO DAYLIGHT WHERE APPLICABLE. MINIMUM SLOPE 2%.
- 7 ADJUSTABLE PIPE STANCHION, GRINELL PIPE SUPPORTS.
- 8 VALVE ASSEMBLY TO BE CENTERED IN VAULT
- 9 CL. 53 D.I., MJ WITH MEGALUGS

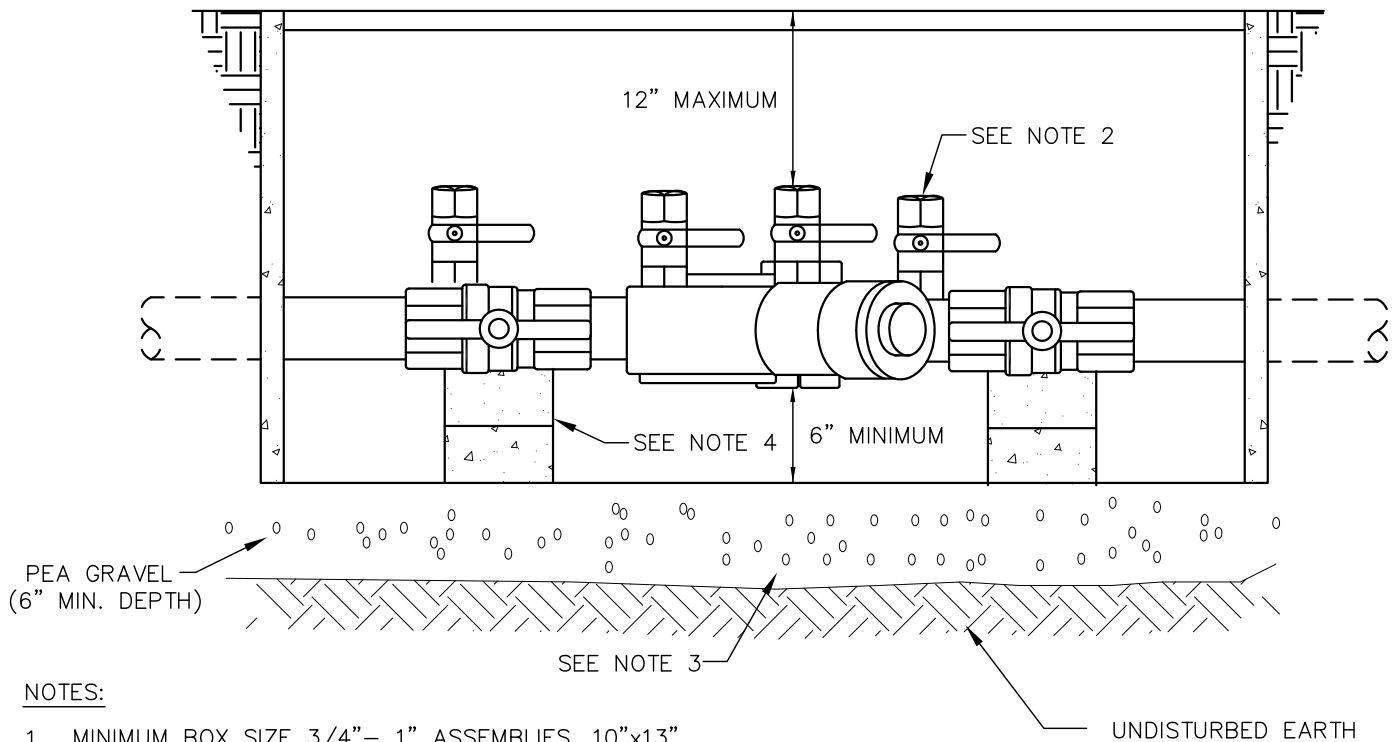
**NOTES:**

- 1. ASSEMBLY SHALL BE MAINTAINED BY PROPERTY OWNER AND ANNUAL CERTIFICATION REQUIRED.
- 2. FIRELINE SHALL NOT BE PUT INTO SERVICE UNTIL THE THE BACKFLOW PREVENTION DEVICE IS APPROVED BY THE DISTRICT.
- 3. A REDUCED PRESSURE BACKFLOW PREVENTION DEVICE MAY BE REQUIRED BY THE DIRECTION OF THE CITY
- 4. PAINT PIPING WITH PARKER PAINT MARINE ENAMEL, MARATHON 1065, TAHOE BLUE.

City of Pacific			
Detector Double Check Valve Assembly			
APPROVED: _____			DRAWING NO. WT- DDCVA
DATE: 8/96	DRAWN: JH	CHECKED: TJO	SCALE: None



PLAN VIEW



**NOTES:**

1. MINIMUM BOX SIZE 3/4" - 1" ASSEMBLIES, 10"x13"  
1 1/4" - 2" ASSEMBLIES, 14"x20"
2. ASSEMBLY MUST BE INSTALLED WITH TEST COCKS FACING UP OR TO ONE SIDE. INSTALL WATERTIGHT PLUGS IN ALL TEST COCKS.
3. SUFFICIENT DRAINAGE MUST BE PROVIDED TO PREVENT ASSEMBLY FROM BEING SUBMERGED.
4. PROVIDE SUPPPORT BLOCKS AS MAY BE REQUIRED.
5. PROVIDE A STRAINER WITH BLOW OUT TAPPING AHEAD OF DEVICE IF REQUIRED BY CITY.
6. THOROUGHLY FLUSH THE LINE, PRIOR TO THE INSTALLATION OF THE DCVA.
7. PROTECT DEVICE FROM FREEZING BY INSTALLING IN STRUCTURE OR PER "HOT BOX" SHOWN IN REDUCED PRESSURE BACKFLOW DEVICE DETAIL.

## City of Pacific

### Detector Double Check Assembly - Residence

DRAWING NO.

WT-  
DDCVA-R

APPROVED:

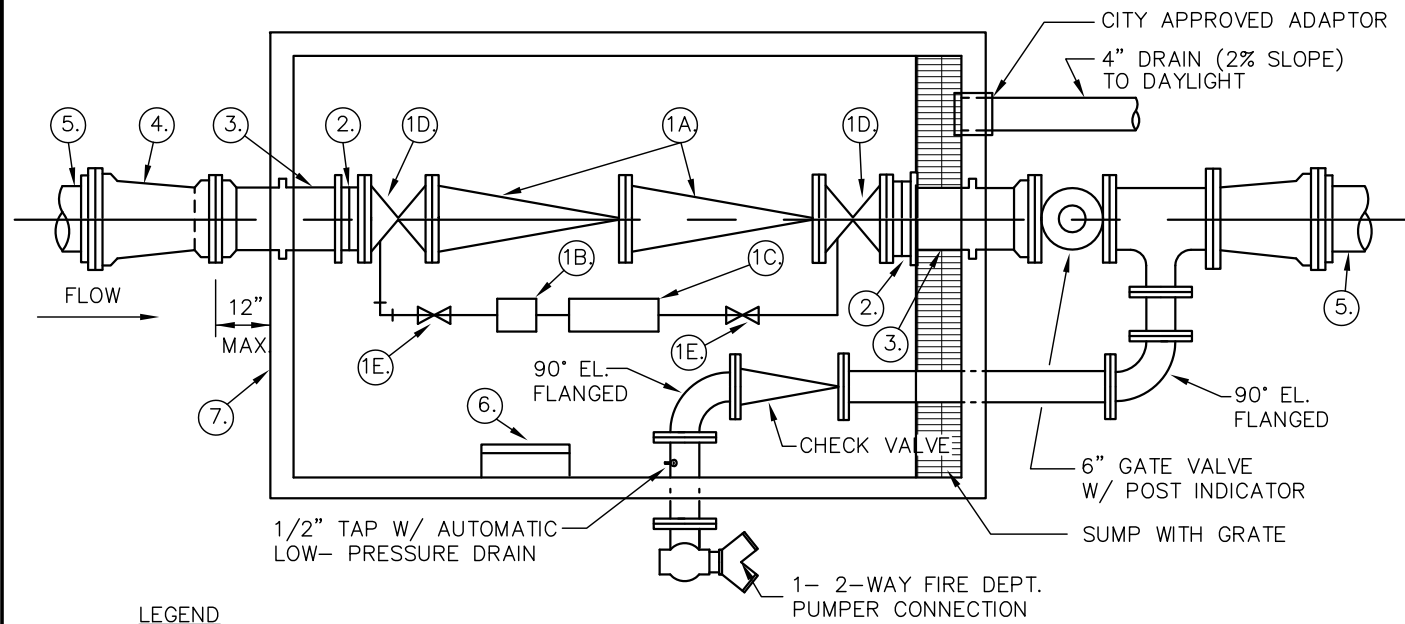
DATE:

DATE:  
8/96

DRAWN:  
JH

CHECKED:  
TJO

SCALE:  
None



LEGEND

- (1). DOUBLE-CHECK DETECTOR VALVE ASSEMBLY CAPABLE OF METERING WATER USAGE UNDER LOW FLOW CONDITIONS. 10.0 P.S.I. HEAD LOSS AT 1600 GPM FOR 8" SIZE. ASSEMBLY TO BE STATE DOH APPROVED. SIZE AS APPROVED BY CITY. (SENSUS TOUCH READ)
  - 1A. 2 - CHECK VALVES, (FL)
  - 1B. 1 - BY-PASS METER 5/8" X 3/4" SENSUS (C.F. READING) METER TOUCH READ COMPLETE WITH SPUD NUT.
  - 1C. 1 - DOUBLE CHECK VALVE ASSEMBLY, (DOH APPROVED.) 3/4" FOR 8" D.D.C.V.
  - 1D. 2 - GATE VALVES, (FL) W/HAND WHEEL; RISING STEM, RESILIENT SEATED AS PER CITY REQUIREMENTS.
  - 1E. 2 - GATE VALVES, (FL) W/ HAND WHEEL; RISING STEM, RESILIENT SEATED AS PER CITY REQUIREMENTS.
- (2). 2 - FLANGED COUPLING ADAPTER, SIZE AS SPECIFIED ON PLANS. (LOCATE MINIMUM 6" FROM INNER WALL )
- (3). 2 - PIPE SPOOLS, PLAIN END.
- (4). 1- REDUCER (MJ X MJ), IF REQUIRED.
- (5). RESTRAINED JOINT WATER MAIN CL50.
- (6). ALUMINUM (TELESCOPING) LADDER, LOCATE AS DIRECTED BY CITY, USE STAINLESS STEEL FASTNERS AT 3' MAX. SPACING
- (7). UTILITY VAULT CO. VAULTS SHALL BE CITY STD. OF QUALITY; SUBMIT ALTERNATIVES FOR APPROVAL. HINGED AND SPRING LOCKED STEEL DIAMOND P/L COVER 2-332P, (DOUBLE HATCH COVER.) 4" C.I. FLOOR DRAIN INTO 4" PVC DRAIN LINE. DAYLIGHT OR STORM SYSTEM. (NO SUMP PUMPS) CHECK VAULT SIZE REQUIRED FOR ENCLOSING COMPLETE ASSEMBLIES.
- (8). PROVIDE GRINNEL PIPE SUPPORTS, TO INCLUDE STEEL YOKE, BOLT TO VAULT FLOOR USING RECOMMENDED CONNECTION AND SIZES.

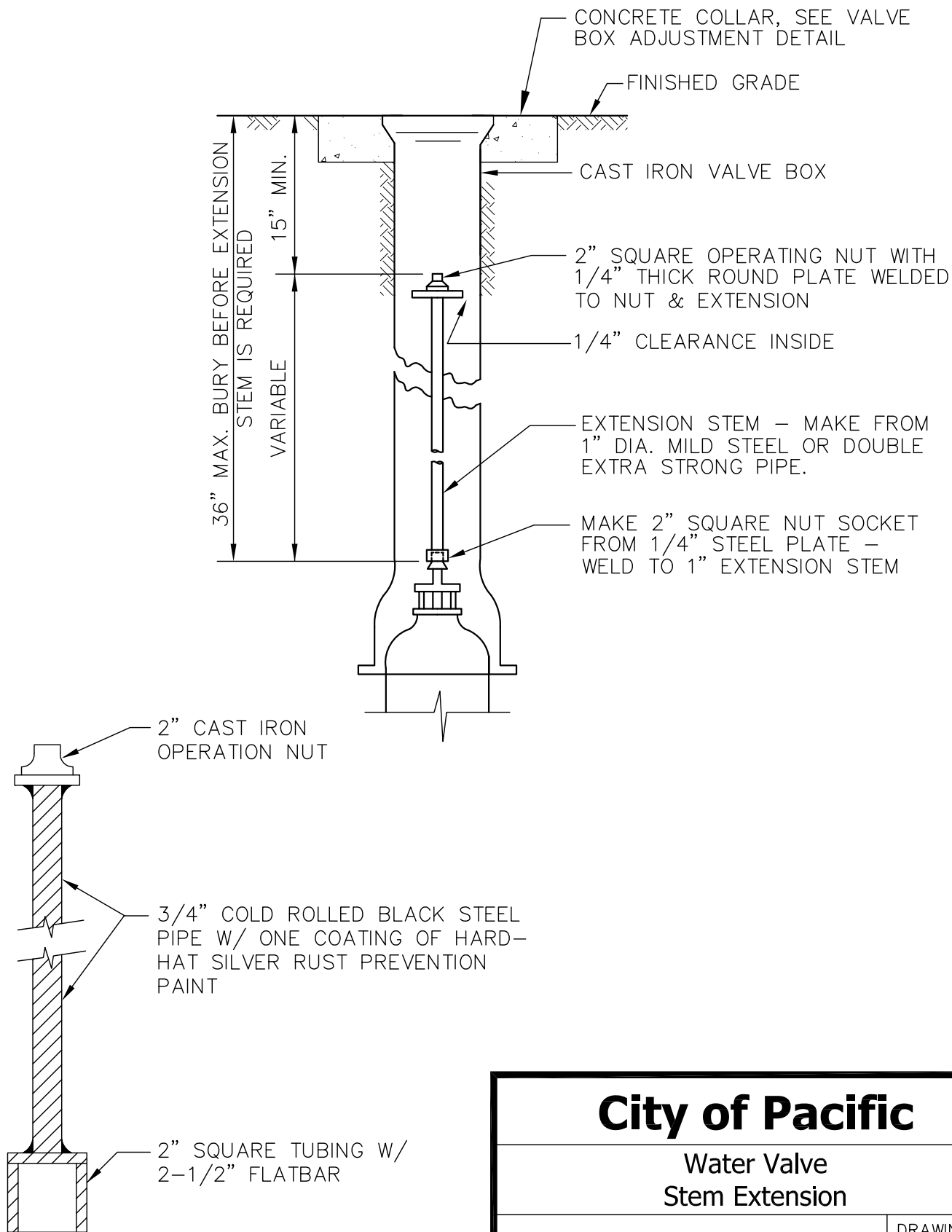
MIN. VAULT SIZES:

4"	5106	LA	--	5'-0" X 10'-6" X 6'-3" HIGH
6"	5106	LA	--	5'-0" X 10'-6" X 6'-3" HIGH
8"	612	LA	--	6'-0" X 12'-0" X 6'-6 1/2" HIGH
10"	612	LA	--	6'-0" X 12'-0" X 6'-6 1/2" HIGH

NOTE:

- 1. PAINT ALL PIPING WITH PARKER PAINT MARINE ENAMEL, MARATHON 1065 TAHOE BLUE
- 2. PROVIDE GRINNELL PIPE SUPPORTS, WHERE REQUIRED. (3 MINIMUM)

<b>City of Pacific</b>			
<b>Detector Double Check with Fire Connection</b>			
APPROVED: _____			DRAWING NO. WT-DDCwFC
DATE: 8/96			SCALE: None
DRAWN: JH		CHECKED: TJO	



# City of Pacific

## Water Valve Stem Extension

APPROVED:

DATE:

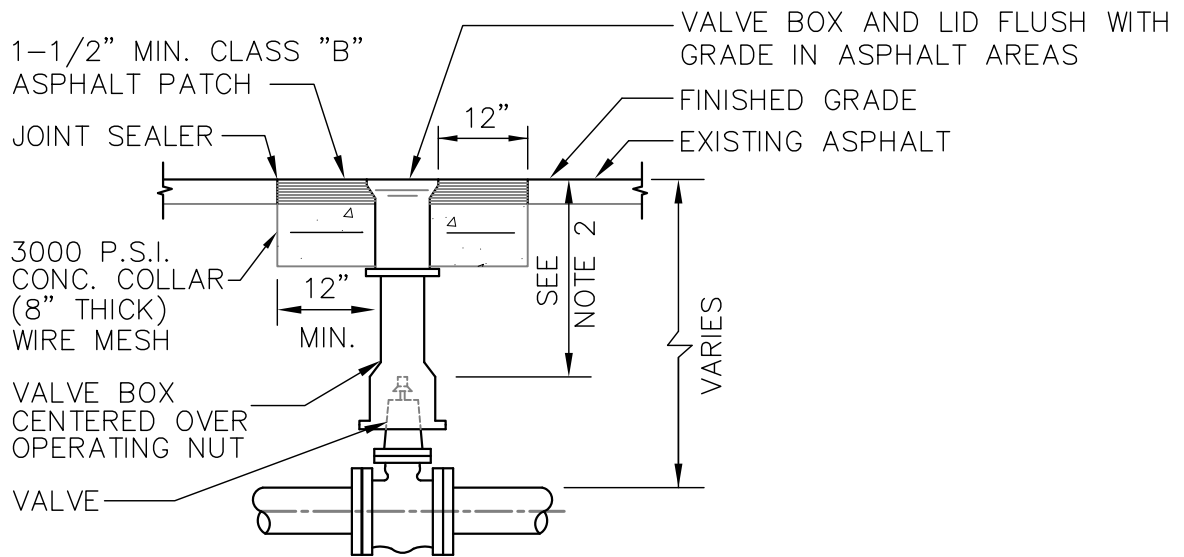
DATE:  
8/96

DRAWN:  
JH

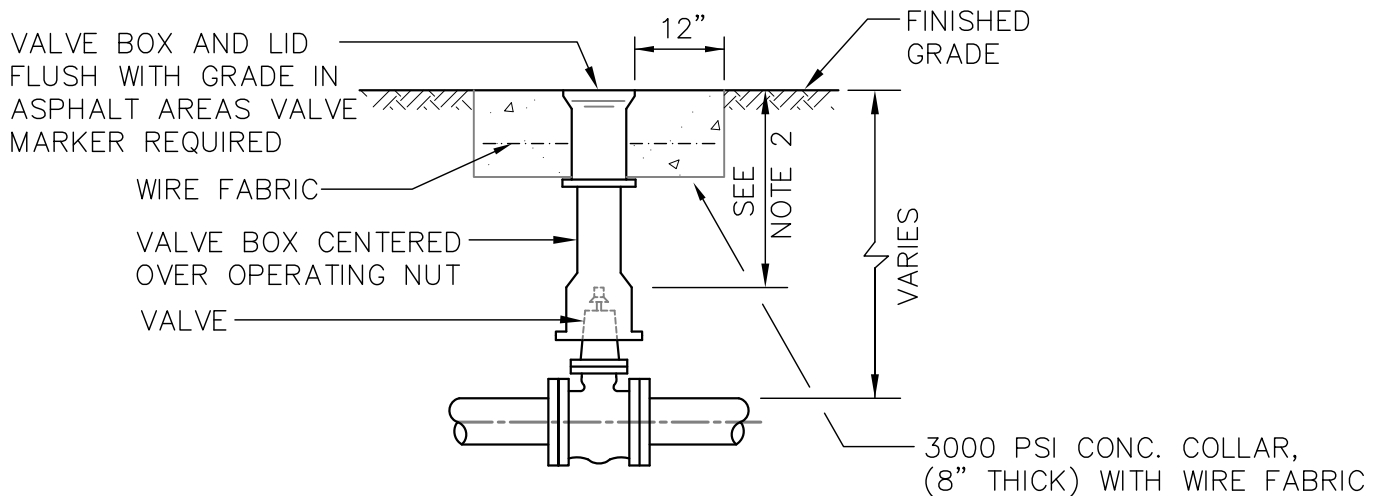
CHECKED:  
TJP

DRAWING NO.  
WT  
Vlv-Stem Ext

SCALE:  
None



### VALVE BOX IN ASPHALT AREA



### VALVE BOX IN UNIMPROVED AREA

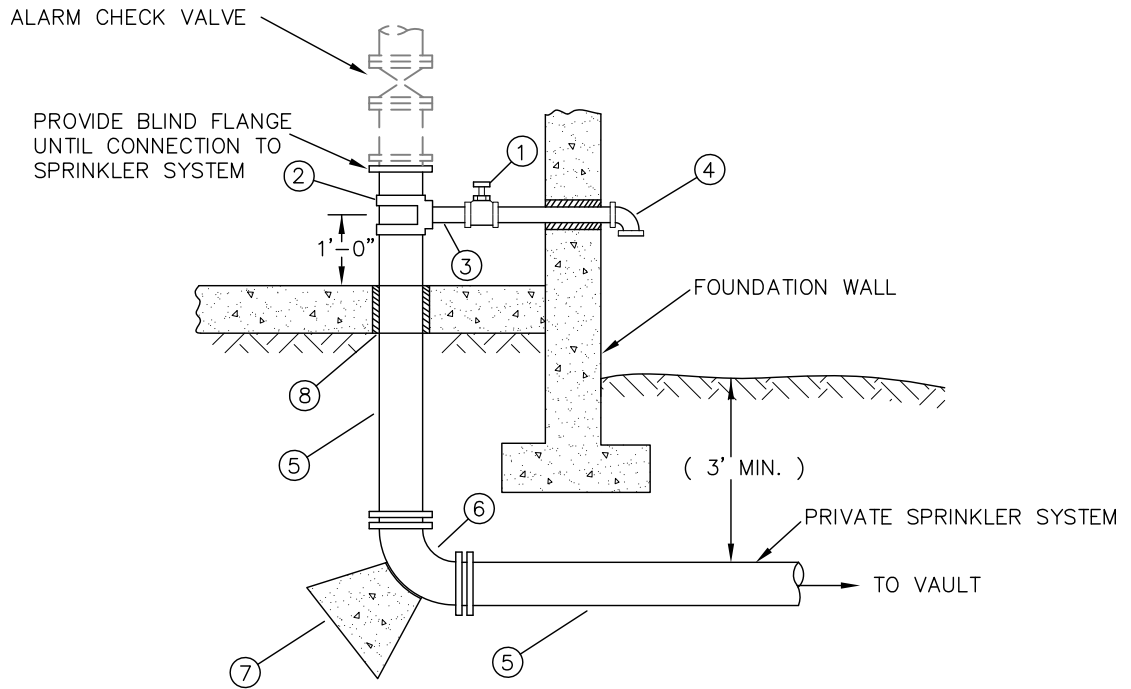
#### NOTES:

1. EACH VALVE SHALL BE PROVIDED WITH AND ADJUSTABLE CAST IRON VALVE BOX OF 5 INCHES (5") INSIDE DIAMETER. VALVE BOXES SHALL HAVE A TOP SECTION WITH AN EIGHTEEN INCH (18") MIN. LENGTH. THE VALVE BOX SHALL BE RICH No. 940 OR APPROVED EQUAL. VALVE BOX EARS SHALL BE PLACED IN LINE WITH PIPE IT SERVES.
2. 15" MINIMUM, 36" MAXIMUM FOR OPERATOR NUT. EXTENSION MAY BE REQUIRED.

## City of Pacific

### Water Valve Box Adjustment

APPROVED: _____			DRAWING NO. WT- Viv-Bx-Adj
DATE: 8/96	DRAWN: JH	CHECKED: TJO	SCALE: None



NO.	DESCRIPTION
1	2" GATE VALVE
2	FORD STAINLESS STEEL DOUBLE STRAP SADDLE (OR APPROVED EQUAL)
3	2" GALV. NIPPLE
4	2" GALV. 90° ELL
5	D.I. CL. 52 SUPPLY MAIN (SIZE AS DETERMINED BY FIRE FLOW REQUIREMENTS)
6	90° BEND (MJ X MJ) WITH MEGALUG ADAPTER
7	CONCRETE THRUST BLOCK (SIZE TO BE APPROVED BY CITY)
8	PIPE SLEEVE

NOTES:

1. AFTER SYSTEM IS TESTED, PURITY SAMPLES WILL BE TAKEN AT ALL RISERS IN SYSTEM

## City of Pacific

### Fire System Riser Detail

APPROVED:

DATE:

DATE:  
8/96

DRAWN:  
JH

CHECKED:  
TJO

DRAWING NO.  
WT-  
Fire Rm Riser

SCALE:  
None